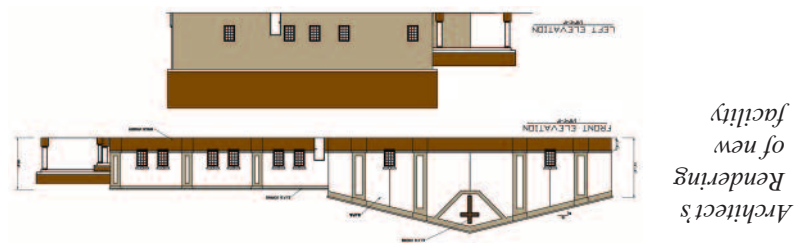


<u>\$ 1,150,000</u>	<u>Interest Rate</u>	<u>Maturities</u>	<u>TOTAL BONDS</u>
329,000	8.25%	1/15/11	7/15/31 to 7/15/34
356,000	8.00%	7/15/11	1/15/26 to 1/15/31
156,000	7.75%	1/15/12	7/15/22 to 7/15/25
37,000	7.50%	7/15/11	7/15/21 to 1/15/22
35,000	7.25%	1/15/12	7/15/20 to 1/15/21
33,000	7.00%	7/15/12	7/15/19 to 1/15/20
30,000	6.75%	1/15/13	7/15/18 to 1/15/19
28,000	6.50%	7/15/12	7/15/17 to 1/15/18
27,000	6.25%	1/15/13	7/15/16 to 1/15/17
47,000	6.00%	7/15/12	7/15/14 to 1/15/16
22,000	5.75%	1/15/13	7/15/13 to 1/15/14
11,000	5.50%	1/15/13	1/15/13
10,000	5.25%	7/15/12	7/15/12
10,000	5.00%	1/15/12	1/15/12
10,000	4.75%	7/15/11	7/15/11
\$ 9,000	4.50%	1/15/11	1/15/11
<u>Bonds Available</u>			

**First Mortgage Bonds
Series 2009**

\$1,150,000



**Eastern Chapel Missionary
Baptist Church
Goldsboro, North Carolina**

AMERICAN INVESTORS GROUP, INC.
10237 Yellow Circle Drive, Minnetonka, MN 55343
PH: 952-945-9455
www.ChurchBondsUSA.com

RETURN SERVICE REQUESTED

PRESORTED
FIRST CLASS MAIL
US POSTAGE PAID
Permit No. 894
MINNEAPOLIS, MN

Offered by
American Investors Group, Inc.

**Meeting the needs
of fixed income
investors since
1987!**

**Earn interest rates from 4.50% to 8.25%
depending on maturity**

Other Fixed Income Securities Available as of July 15, 2009

Greater New Birth Church, Inc.

Milwaukee, Wisconsin

Issued October 2008

Original Issue Amount: \$4,115,000

<u>Rate</u>	<u>Matures</u>	<u>Years</u>
6.25%	10/1/16	8
6.50%	10/1/17	9
6.75%	4/1/18 to 10/1/18	9.5 to 10
7.00%	4/1/19 to 10/1/19	10.5 to 11
7.25%	4/1/20 to 10/1/20	11.5 to 12
7.75%	4/1/22 to 10/1/22	13.5 to 14
8.00%	4/1/23 to 10/1/24	14.5 to 16
8.25%	10/1/34 to 10/1/38	26 to 30



**Mountain of Blessings
Christian Center**

Richmond, Virginia

Issued May 15, 2009

Original Issue Amount \$2,270,000

<u>Rate</u>	<u>Matures</u>	<u>Years</u>
5.50%	5/15/14	5
5.75%	5/15/15	6
6.00%	5/15/16	7
6.25%	11/15/16 to 5/15/17	7.5 to 8
6.50%	11/15/17 to 5/15/18	8.5 to 9
6.75%	11/15/18 to 5/15/19	9.5 to 10
7.00%	11/15/19 to 11/15/20	10.5 to 11.5
7.25%	5/15/21 to 5/15/22	12 to 12
7.50%	11/15/22 to 11/15/23	13.5 to 14.5
7.75%	5/15/24 to 5/15/25	15 to 16
8.00%	11/15/25 to 11/15/30	16.5 to 21.5
8.25%	11/15/32 to 5/15/34	23.5 to 25



Pembroke Park Church of Christ

Hollywood, Florida

Issued February 2009

Original Issue Amount: \$2,735,000

<u>Rate</u>	<u>Matures</u>	<u>Years</u>
6.50%	8/15/18	9.5
7.00%	2/15/21	12
7.25%	2/15/22	13
7.50%	2/15/23	14
7.75%	8/15/24	15.5
8.00%	2/15/27 to 2/15/33	18 to 24
8.25%	2/15/38 to 2/15/39	29 to 30



Discovery Church

Cibolo, Texas

Issued March 2009

Original Issue Amount: \$1,395,000

<u>Rate</u>	<u>Matures</u>	<u>Years</u>
6.25%	3/15/18	9
6.75%	3/15/20	11
7.50%	3/15/23	14
7.75%	3/15/24 to 9/15/24	15 to 15.5
8.00%	3/15/28 to 3/15/33	19 to 24
8.25%	9/15/38 to 3/15/39	29.5 to 30



Maranatha International Church

Houston, Texas

Issued April 2009

Original Issue Amount \$435,000

<u>Rate</u>	<u>Matures</u>	<u>Years</u>
8.00%	10/15/25 to 4/15/33	16.5 to 24.0
8.25%	10/15/35	26.5



For an Offering Circular, please contact your American Investors Group, Inc. account executive or call us at (800) 815-1175 ext. 124.

NOTICE:

Investing in mortgage-secured Church Bonds involves certain risks relating to liquidity, fluctuations in interest rates generally, and general local and national economic factors. Certain additional risk considerations are discussed in the Offering Circular including the limited-use nature of the real property securing the Bonds; dependency on voluntary giving of members to sustain revenue of the issuer; ability of the issuer to issue additional bonds in the future; and others. Offers and sales of the bonds are made only through the Offering Circular, which you are encouraged to review carefully before you invest.

Use of Net Proceeds (Eastern Chapel Missionary Baptist Church – New Construction)

Net proceeds from the sale of the Bonds are scheduled to be used to (i) fund \$1,049,000 of the construction of the Church's new sanctuary; and (ii) pay for certain costs and expenses expected to be incurred directly by the Church in connection with this Offering.

This notice is not an offer to sell nor a solicitation of an offer to buy these securities. Offers may be made only by means of an Offering Circular, to which reference is made for the complete information authorized in the sale of these securities – including Risk Factors. Offers and sales may be made only in states where the Bonds are exempt from registration or have been authorized for sale.